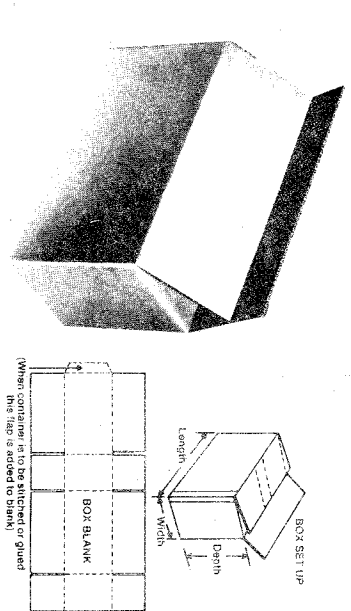
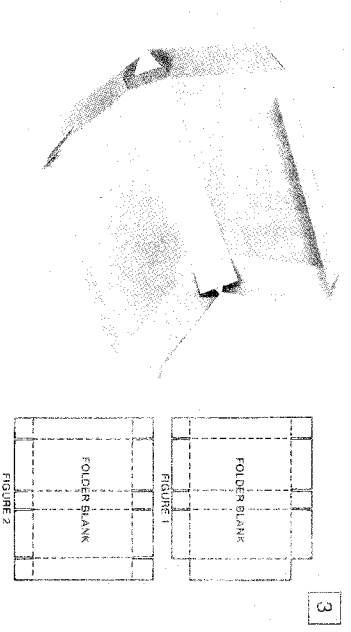


1



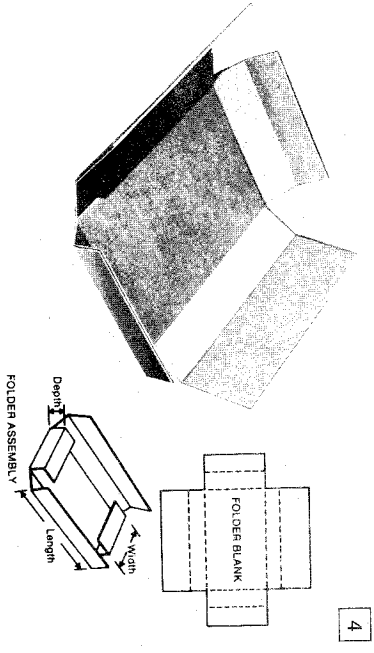
2



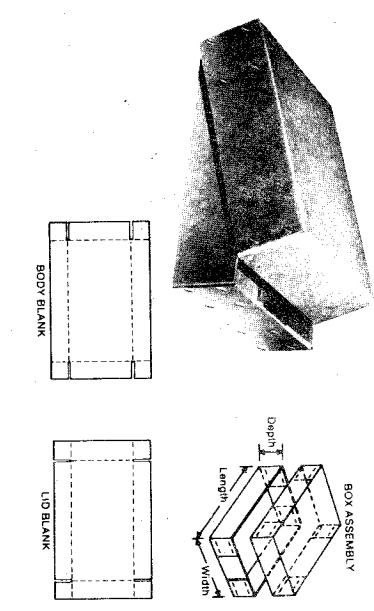
3

REGULAR SLOTTED CARTON (R.S.C.)

The outer flaps, when folded down, meet at the centre of the width of the box; folded inner flaps meet only if box is square.



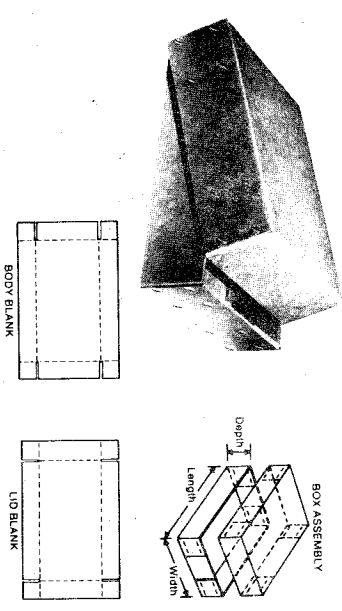
4



5

FULL OVERLAP CARTON (F.O.L.)

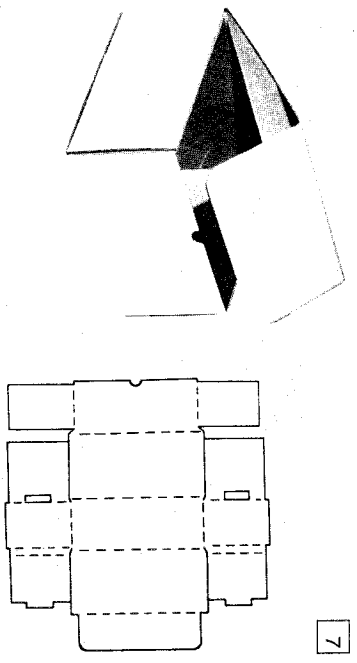
The outer flaps, when folded down, overlap the full width of the box.



5

CUT OUT WRAP (C.O.W.)

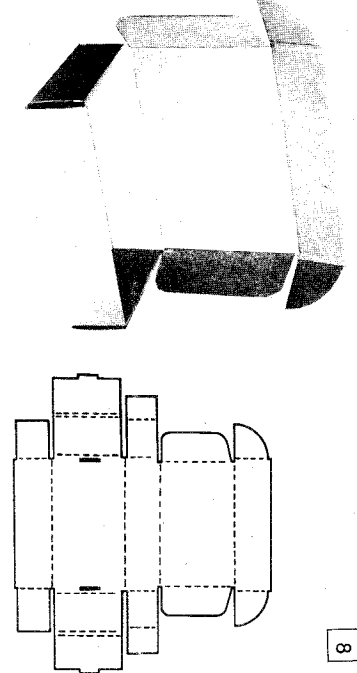
Generally, the end tuck in flaps are 2 1/2" long but these may be extended as required. The side flaps meet in the centre of the width dimension and are usually sealed with gummed tape.



7

FULL TELESCOPE

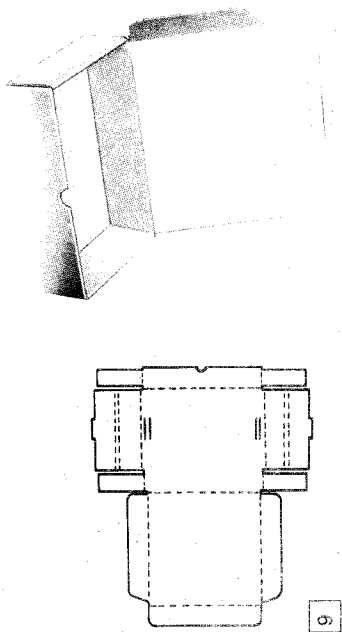
This style is made of two pieces - one body blank and one cover blank. The cover is made the same depth as the body. Both pieces are shipped flat and can be assembled with stitches, staples or glue.



8

FIVE-PANEL WRAP (5PW)

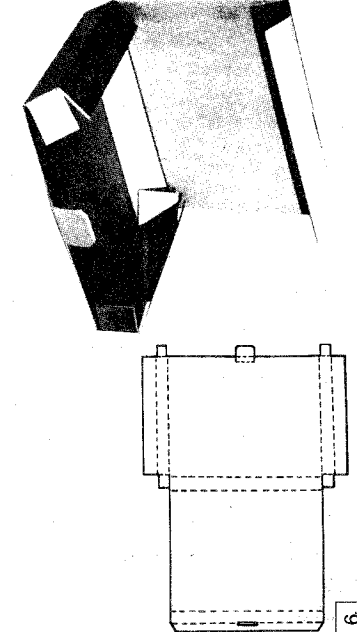
This style is made from a one piece blank having flaps at both ends. These flaps are generally fully overlapped but may be regular or semi-overlap as required. The fifth panel of the folder can be supplied either with flaps cut off (Figure 1) or left intact (Figure 2).



6

TRAY PAK

This one piece die-cut style folder is completely self locking. Features include multi-thickness ends, tuck in lid and a flat bottom. The side flaps shown on the tuck in lid are optional. Additional lock tabs can be provided for secure closure of the lid.



9

BRAKESHOE

This one piece die-cut style is completely self-locking. Features include triple ends, double bottom and tuck in lid. Lock tab to secure tuck in lid is available as required.

TRAY PAK (FRONT LOCK)

This one piece die-cut style is similar in style to item 8. The locking flaps attached to the front flap are inserted into the channels at the front of the assembled folder to securely lock the cover in place.

T-BOOKWRAP

This die-cut style folder is ideal for shipments by parcel post of flat objects. Features tuck in lid. Locking tab to secure tuck in flap is optional.